



Sheep and Goats

ISSN: 1949-1611

Released January 31, 2017, by the National Agricultural Statistics Service (NASS), Agricultural Statistics Board, United States Department of Agriculture (USDA).

January 1 Sheep and Lamb Inventory Down 2 Percent

All sheep and lamb inventory in the United States on January 1, 2017 totaled 5.20 million head, down 2 percent from 2016. Breeding sheep inventory at 3.86 million head on January 1, 2017, decreased 2 percent from 3.95 million head on January 1, 2016. Ewes one year old and older, at 3.04 million head, were 2 below last year. Market sheep and lambs on January 1, 2017 totaled 1.35 million head, down 1 percent from January 1, 2016. Market lambs comprised 94 percent of the total market inventory. Market sheep comprised the remaining 6 percent of total market inventory.

The 2016 lamb crop of 3.25 million head was down 1 percent from 2015. The 2016 lambing rate was 105 lambs per 100 ewes one year old and older on January 1, 2016, unchanged from 2015.

Shorn wool production in the United States during 2016 was 25.7 million pounds, down 5 percent from 2015. Sheep and lambs shorn totaled 3.56 million head, down 3 percent from 2015. The average price paid for wool sold in 2016 was \$1.45 per pound for a total value of 37.2 million dollars, down 5 percent from 39.2 million dollars in 2015.

Sheep death loss during 2016 totaled 217 thousand head, down 5 percent from 2015. Lamb death loss decreased 1 percent from 374 thousand head to 372 thousand head in 2016.

January 1 Goat and Kid Inventory Up 1 Percent

All goat inventory in the United States on January 1, 2017 totaled 2.64 million head, up 1 percent from 2016. Breeding goat inventory totaled 2.17 million head, up slightly from 2016. Does one year old and older, at 1.61 million head, were slightly above last year's number. Market goats and kids totaled 469 thousand head, up 2 percent from a year ago.

Kid crop for 2016 totaled 1.64 million head for all goats, up 1 percent from 2015.

Meat and all other goats totaled 2.12 million head on January 1, 2017, up 1 percent from 2016. Milk goat inventory was 373 thousand head, unchanged from January 1, 2016, while Angora goats were up 1 percent, totaling 152 thousand head.

Mohair production in the United States during 2016 was 800 thousand pounds. Goats and kids clipped totaled 141 thousand head. Average weight per clip was 5.7 pounds. Mohair price was \$4.56 per pound with a value of 3.65 million dollars.

Sheep and Goat Revisions

All sheep and goat inventory and lamb and kid crop estimates for January 1, 2016, were reviewed using official slaughter, import and export data, and the relationship of new survey information to the prior surveys. A revision of 0.4 percent was made to sheep inventory and a revision of 5 percent to lamb crop at the United States level. No revisions were made to all goat inventory and a 3 percent change was made to the kid crop. State level estimates were reviewed and changes were made to reallocate inventory estimates to the United States total.

This page intentionally left blank

Contents

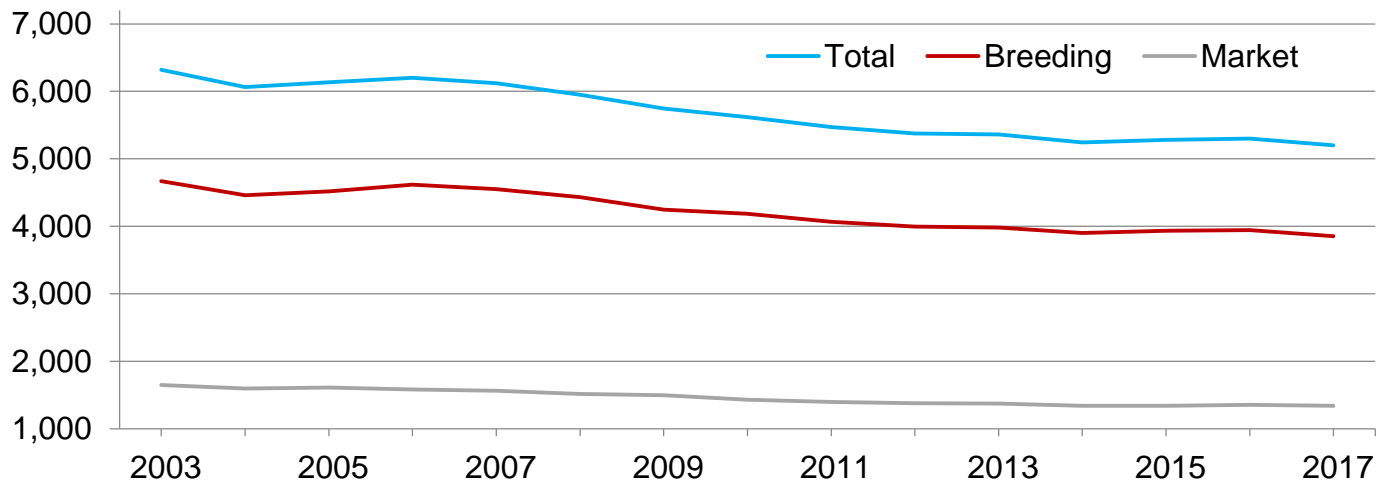
Sheep and Lamb Inventory by Class – United States: January 1, 2016 and 2017	4
All Sheep and Lamb Inventory – United States: January 1	4
Wool Production, Price, and Value – United States: 2015 and 2016.....	4
Sheep and Lamb Inventory by Class – States and United States: January 1, 2016 and 2017.....	5
Breeding Sheep and Lamb Inventory by Class – States and United States: January 1, 2016 and 2017	6
Lamb Crop – States and United States: 2015 and 2016.....	7
Market Sheep and Lamb Inventory by Weight Group – States and United States: January 1, 2016.....	8
Market Sheep and Lamb Inventory by Weight Group – States and United States: January 1, 2017.....	9
Sheep and Lamb Farm Slaughter and Death Loss – States and United States: 2015 and 2016.....	10
Wool Production – States and United States: 2015 and 2016.....	11
Wool Price and Value – States and United States: 2015 and 2016.....	12
Goat and Kid Inventory by Class – United States: January 1, 2016 and 2017	13
All Goat Inventory – United States: January 1	13
Angora Goat Inventory by Class – United States: January 1, 2016 and 2017	14
Milk Goat Inventory by Class – United States: January 1, 2016 and 2017	14
Meat and Other Goat Inventory by Class – United States: January 1, 2016 and 2017	14
Angora Goat Inventory – States and United States: January 1, 2016 and 2017.....	15
Mohair Production, Price, and Value – States and United States: 2015 and 2016	15
Milk Goat Inventory – States and United States: January 1, 2016 and 2017.....	16
Meat and Other Goat Inventory – States and United States: January 1, 2016 and 2017	17
Statistical Methodology	18
Reliability of January 1 Sheep and Lamb Estimates.....	19
Information Contacts	19

Sheep and Lamb Inventory by Class – United States: January 1, 2016 and 2017

Class	2016	2017	2017 as percent of 2016
	(1,000 head)	(1,000 head)	(percent)
All sheep and lambs	5,300.0	5,200.0	98
Breeding sheep and lambs	3,945.0	3,855.0	98
Replacement lambs under one year old	665.0	650.0	98
Ewes - one year old and older	3,105.0	3,035.0	98
Rams - one year old and older	175.0	170.0	97
Market sheep and lambs	1,355.0	1,345.0	99

All Sheep and Lamb Inventory – United States: January 1

Thousand head



Wool Production, Price, and Value – United States: 2015 and 2016

Year	Sheep shorn ¹	Weight per fleece	Shorn wool production	Price per pound	Value
	(1,000 head)	(pounds)	(1,000 pounds)	(dollars)	(1,000 dollars)
2015	3,675	7.4	27,015	1.45	39,205
2016	3,560	7.2	25,740	1.45	37,214

¹ Includes shearing at commercial feeding yards.

Sheep and Lamb Inventory by Class – States and United States: January 1, 2016 and 2017

State	All sheep and lambs			Total breeding		Total market	
	2016	2017	2017 as percent of 2016	2016	2017	2016	2017
	(1,000 head)	(1,000 head)	(percent)	(1,000 head)	(1,000 head)	(1,000 head)	(1,000 head)
Arizona	140.0	130.0	93	101.0	97.0	39.0	33.0
California	575.0	585.0	102	320.0	325.0	255.0	260.0
Colorado	435.0	395.0	91	220.0	200.0	215.0	195.0
Idaho	255.0	255.0	100	185.0	184.0	70.0	71.0
Illinois	60.0	55.0	92	50.0	46.0	10.0	9.0
Indiana	50.0	52.0	104	43.0	45.0	7.0	7.0
Iowa	175.0	175.0	100	125.0	120.0	50.0	55.0
Kansas	65.0	68.0	105	44.0	45.0	21.0	23.0
Kentucky	53.0	48.0	91	42.0	38.0	11.0	10.0
Michigan	82.0	85.0	104	58.0	61.0	24.0	24.0
Minnesota	125.0	130.0	104	88.0	91.0	37.0	39.0
Missouri	88.0	90.0	102	76.0	70.0	12.0	20.0
Montana	230.0	230.0	100	210.0	200.0	20.0	30.0
Nebraska	80.0	83.0	104	67.0	71.0	13.0	12.0
Nevada	60.0	63.0	105	49.0	54.0	11.0	9.0
New England ¹	42.0	43.0	102	33.0	33.0	9.0	10.0
New Mexico	90.0	97.0	108	76.0	82.0	14.0	15.0
New York	80.0	75.0	94	68.0	62.0	12.0	13.0
North Carolina	32.0	30.0	94	27.0	25.0	5.0	5.0
North Dakota	73.0	66.0	90	53.0	52.0	20.0	14.0
Ohio	120.0	117.0	98	96.0	92.0	24.0	25.0
Oklahoma	46.0	48.0	104	37.0	38.0	9.0	10.0
Oregon	180.0	170.0	94	130.0	124.0	50.0	46.0
Pennsylvania	94.0	93.0	99	77.0	75.0	17.0	18.0
South Dakota	265.0	250.0	94	200.0	193.0	65.0	57.0
Tennessee	48.0	46.0	96	40.0	38.0	8.0	8.0
Texas	725.0	700.0	97	580.0	560.0	145.0	140.0
Utah	285.0	275.0	96	265.0	255.0	20.0	20.0
Virginia	75.0	80.0	107	60.0	61.0	15.0	19.0
Washington	50.0	48.0	96	41.0	39.0	9.0	9.0
West Virginia	36.0	34.0	94	30.0	28.0	6.0	6.0
Wisconsin	76.0	76.0	100	63.0	63.0	13.0	13.0
Wyoming	355.0	360.0	101	265.0	275.0	90.0	85.0
Other States ²	155.0	148.0	95	126.0	113.0	29.0	35.0
United States	5,300.0	5,200.0	98	3,945.0	3,855.0	1,355.0	1,345.0

¹ New England includes Connecticut, Maine, Massachusetts, New Hampshire, Rhode Island, and Vermont.

² Includes data for States not published in this table.

Breeding Sheep and Lamb Inventory by Class – States and United States: January 1, 2016 and 2017

State	Breeding sheep				Replacement lambs		Total breeding sheep and lambs	
	Ewes		Rams		2016	2017	2016	2017
	2016	2017	2016	2017				
	(1,000 head)	(1,000 head)	(1,000 head)	(1,000 head)	(1,000 head)	(1,000 head)	(1,000 head)	(1,000 head)
Arizona	71.0	68.0	6.0	6.0	24.0	23.0	101.0	97.0
California	265.0	270.0	10.0	10.0	45.0	45.0	320.0	325.0
Colorado	184.0	160.0	7.0	6.0	29.0	34.0	220.0	200.0
Idaho	146.0	138.0	5.0	5.0	34.0	41.0	185.0	184.0
Illinois	39.0	36.0	3.0	2.0	8.0	8.0	50.0	46.0
Indiana	33.0	35.0	3.0	4.0	7.0	6.0	43.0	45.0
Iowa	100.0	95.0	5.0	5.0	20.0	20.0	125.0	120.0
Kansas	36.0	36.0	2.0	2.0	6.0	7.0	44.0	45.0
Kentucky	33.0	30.0	2.0	2.0	7.0	6.0	42.0	38.0
Michigan	42.0	44.0	3.0	3.0	13.0	14.0	58.0	61.0
Minnesota	70.0	72.0	4.0	5.0	14.0	14.0	88.0	91.0
Missouri	60.0	55.0	3.0	3.0	13.0	12.0	76.0	70.0
Montana	159.0	159.0	6.0	6.0	45.0	35.0	210.0	200.0
Nebraska	55.0	58.0	3.0	3.0	9.0	10.0	67.0	71.0
Nevada	40.0	43.0	2.0	2.0	7.0	9.0	49.0	54.0
New England ¹	25.0	24.0	2.0	2.0	6.0	7.0	33.0	33.0
New Mexico	58.0	59.0	4.0	5.0	14.0	18.0	76.0	82.0
New York	50.0	47.0	3.0	3.0	15.0	12.0	68.0	62.0
North Carolina	20.0	19.0	3.0	2.0	4.0	4.0	27.0	25.0
North Dakota	44.0	42.0	2.0	2.0	7.0	8.0	53.0	52.0
Ohio	73.0	70.0	6.0	6.0	17.0	16.0	96.0	92.0
Oklahoma	29.0	29.0	2.0	2.0	6.0	7.0	37.0	38.0
Oregon	101.0	101.0	6.0	5.0	23.0	18.0	130.0	124.0
Pennsylvania	59.0	59.0	5.0	5.0	13.0	11.0	77.0	75.0
South Dakota	161.0	155.0	6.0	6.0	33.0	32.0	200.0	193.0
Tennessee	30.0	29.0	3.0	3.0	7.0	6.0	40.0	38.0
Texas	445.0	435.0	35.0	35.0	100.0	90.0	580.0	560.0
Utah	215.0	205.0	8.0	8.0	42.0	42.0	265.0	255.0
Virginia	50.0	49.0	3.0	3.0	7.0	9.0	60.0	61.0
Washington	31.0	28.0	3.0	2.0	7.0	9.0	41.0	39.0
West Virginia	24.0	23.0	1.0	1.0	5.0	4.0	30.0	28.0
Wisconsin	49.0	48.0	2.0	3.0	12.0	12.0	63.0	63.0
Wyoming	215.0	225.0	7.0	7.0	43.0	43.0	265.0	275.0
Other States ²	93.0	89.0	10.0	6.0	23.0	18.0	126.0	113.0
United States	3,105.0	3,035.0	175.0	170.0	665.0	650.0	3,945.0	3,855.0

¹ New England includes Connecticut, Maine, Massachusetts, New Hampshire, Rhode Island, and Vermont.

² Includes data for States not published in this table.

Lamb Crop – States and United States: 2015 and 2016

State	Ewes 1 year and older January 1		Lambs per 100 ewes January 1		Lamb crop ¹		
	2015	2016	2015	2016	2015	2016	2016 as percent of 2015
	(1,000 head)	(1,000 head)	(number)	(number)	(1,000 head)	(1,000 head)	(percent)
Arizona	76.0	71.0	67	63	51.0	45.0	88
California	275.0	265.0	85	92	235.0	245.0	104
Colorado	184.0	184.0	109	98	200.0	180.0	90
Idaho	150.0	146.0	120	110	180.0	160.0	89
Illinois	38.0	39.0	118	118	45.0	46.0	102
Indiana	34.0	33.0	121	121	41.0	40.0	98
Iowa	100.0	100.0	124	125	124.0	125.0	101
Kansas	36.0	36.0	119	122	43.0	44.0	102
Kentucky	30.0	33.0	117	115	35.0	38.0	109
Michigan	40.0	42.0	123	119	49.0	50.0	102
Minnesota	73.0	70.0	123	129	90.0	90.0	100
Missouri	58.0	60.0	124	123	72.0	74.0	103
Montana	153.0	159.0	124	119	190.0	190.0	100
Nebraska	55.0	55.0	118	118	65.0	65.0	100
Nevada	48.0	40.0	102	105	49.0	42.0	86
New England ²	26.0	25.0	108	116	28.0	29.0	104
New Mexico	58.0	58.0	78	81	45.0	47.0	104
New York	51.0	50.0	118	120	60.0	60.0	100
North Carolina	18.0	20.0	106	95	19.0	19.0	100
North Dakota	42.0	44.0	119	116	50.0	51.0	102
Ohio	73.0	73.0	121	121	88.0	88.0	100
Oklahoma	31.0	29.0	100	114	31.0	33.0	106
Oregon	110.0	101.0	108	120	119.0	121.0	102
Pennsylvania	56.0	59.0	116	110	65.0	65.0	100
South Dakota	162.0	161.0	120	121	195.0	195.0	100
Tennessee	28.0	30.0	121	120	34.0	36.0	106
Texas	435.0	445.0	80	76	350.0	340.0	97
Utah	220.0	215.0	105	107	230.0	230.0	100
Virginia	50.0	50.0	116	116	58.0	58.0	100
Washington	31.0	31.0	110	116	34.0	36.0	106
West Virginia	22.0	24.0	114	117	25.0	28.0	112
Wisconsin	50.0	49.0	120	122	60.0	60.0	100
Wyoming	210.0	215.0	112	114	235.0	245.0	104
Other States ³	87.0	93.0	92	81	80.0	75.0	94
United States	3,110.0	3,105.0	105	105	3,275.0	3,250.0	99

¹ Lamb crop is defined as lambs born in the Eastern States and lambs docked or branded in the Western States.

² New England includes Connecticut, Maine, Massachusetts, New Hampshire, Rhode Island, and Vermont.

³ Includes data for States not published in this table.

Market Sheep and Lamb Inventory by Weight Group – States and United States: January 1, 2016

State	Market lambs					Market sheep	Total market sheep and lambs
	Under 65 pounds	65 - 84 pounds	85 - 105 pounds	Over 105 pounds	Total		
	(1,000 head)	(1,000 head)	(1,000 head)	(1,000 head)	(1,000 head)	(1,000 head)	(1,000 head)
Arizona	12.0	7.0	6.0	10.0	35.0	4.0	39.0
California	110.0	15.0	45.0	75.0	245.0	10.0	255.0
Colorado	3.0	9.0	22.0	179.0	213.0	2.0	215.0
Idaho	2.0	10.0	13.0	44.0	69.0	1.0	70.0
Illinois	2.0	3.0	2.0	2.0	9.0	1.0	10.0
Indiana	3.0	1.0	1.0	1.0	6.0	1.0	7.0
Iowa	5.0	7.0	16.0	21.0	49.0	1.0	50.0
Kansas	9.0	2.0	2.5	4.5	18.0	3.0	21.0
Kentucky	5.7	3.0	1.3	0.5	10.5	0.5	11.0
Michigan	3.0	6.0	5.0	7.0	21.0	3.0	24.0
Minnesota	7.0	7.0	8.0	14.0	36.0	1.0	37.0
Missouri	5.2	2.2	2.3	1.3	11.0	1.0	12.0
Montana	1.0	5.0	7.0	5.0	18.0	2.0	20.0
Nebraska	2.5	1.8	3.0	4.7	12.0	1.0	13.0
Nevada	2.0	2.0	3.0	3.0	10.0	1.0	11.0
New England ¹	2.2	1.3	1.2	1.3	6.0	3.0	9.0
New Mexico	2.0	5.0	3.0	2.0	12.0	2.0	14.0
New York	3.0	4.0	3.0	1.0	11.0	1.0	12.0
North Carolina	2.4	0.8	0.6	0.2	4.0	1.0	5.0
North Dakota	1.0	5.0	8.0	5.0	19.0	1.0	20.0
Ohio	7.0	5.0	5.5	5.5	23.0	1.0	24.0
Oklahoma	5.5	1.0	1.0	1.0	8.5	0.5	9.0
Oregon	5.0	7.0	15.0	20.0	47.0	3.0	50.0
Pennsylvania	7.0	5.0	2.0	1.0	15.0	2.0	17.0
South Dakota	8.5	10.0	11.5	33.0	63.0	2.0	65.0
Tennessee	5.0	1.4	0.6	0.5	7.5	0.5	8.0
Texas	80.0	25.0	15.0	15.0	135.0	10.0	145.0
Utah	2.0	3.0	7.0	7.0	19.0	1.0	20.0
Virginia	6.5	5.0	2.0	0.5	14.0	1.0	15.0
Washington	1.5	2.5	1.5	2.0	7.5	1.5	9.0
West Virginia	3.0	1.0	1.5	0.5	6.0	-	6.0
Wisconsin	4.0	2.0	2.0	3.0	11.0	2.0	13.0
Wyoming	1.0	10.0	43.0	31.0	85.0	5.0	90.0
Other States ²	13.0	5.0	3.5	2.5	24.0	5.0	29.0
United States	332.0	180.0	264.0	504.0	1,280.0	75.0	1,355.0

- Represents zero.

¹ New England includes Connecticut, Maine, Massachusetts, New Hampshire, Rhode Island, and Vermont.

² Includes data for States not published in this table.

Market Sheep and Lamb Inventory by Weight Group – States and United States: January 1, 2017

State	Market lambs					Market sheep	Total market sheep and lambs
	Under 65 pounds	65 - 84 pounds	85 - 105 pounds	Over 105 pounds	Total		
	(1,000 head)	(1,000 head)	(1,000 head)	(1,000 head)	(1,000 head)	(1,000 head)	(1,000 head)
Arizona	13.0	3.0	5.0	8.0	29.0	4.0	33.0
California	110.0	20.0	45.0	75.0	250.0	10.0	260.0
Colorado	5.0	14.0	48.0	124.0	191.0	4.0	195.0
Idaho	2.0	6.0	15.0	47.0	70.0	1.0	71.0
Illinois	4.0	2.0	1.0	1.0	8.0	1.0	9.0
Indiana	3.0	1.0	1.0	1.0	6.0	1.0	7.0
Iowa	5.0	8.0	20.0	21.0	54.0	1.0	55.0
Kansas	8.5	2.0	1.5	9.0	21.0	2.0	23.0
Kentucky	4.5	3.0	1.5	0.5	9.5	0.5	10.0
Michigan	3.0	5.0	5.0	9.0	22.0	2.0	24.0
Minnesota	7.0	8.0	8.5	13.5	37.0	2.0	39.0
Missouri	5.0	5.0	5.0	3.0	18.0	2.0	20.0
Montana	2.0	9.0	11.0	7.0	29.0	1.0	30.0
Nebraska	2.3	2.0	2.7	4.0	11.0	1.0	12.0
Nevada	1.0	1.5	2.5	3.0	8.0	1.0	9.0
New England ¹	2.8	1.4	1.0	1.8	7.0	3.0	10.0
New Mexico	3.0	4.0	3.0	2.0	12.0	3.0	15.0
New York	3.0	4.0	3.0	1.0	11.0	2.0	13.0
North Carolina	2.1	1.0	0.5	0.4	4.0	1.0	5.0
North Dakota	1.0	4.0	3.0	5.0	13.0	1.0	14.0
Ohio	8.0	6.0	5.0	5.0	24.0	1.0	25.0
Oklahoma	6.5	1.0	1.0	1.0	9.5	0.5	10.0
Oregon	5.0	6.0	15.5	17.5	44.0	2.0	46.0
Pennsylvania	6.0	3.0	3.0	1.0	13.0	5.0	18.0
South Dakota	10.0	9.0	15.0	21.0	55.0	2.0	57.0
Tennessee	5.0	1.3	0.4	0.3	7.0	1.0	8.0
Texas	80.0	20.0	10.0	20.0	130.0	10.0	140.0
Utah	3.0	3.0	5.0	8.0	19.0	1.0	20.0
Virginia	8.0	5.0	4.0	1.0	18.0	1.0	19.0
Washington	2.5	2.5	1.0	1.0	7.0	2.0	9.0
West Virginia	3.0	1.0	1.5	0.5	6.0	-	6.0
Wisconsin	4.0	2.0	2.0	4.0	12.0	1.0	13.0
Wyoming	2.0	9.0	44.0	28.0	83.0	2.0	85.0
Other States ²	14.8	7.3	4.4	5.5	32.0	3.0	35.0
United States	345.0	180.0	295.0	450.0	1,270.0	75.0	1,345.0

- Represents zero.

¹ New England includes Connecticut, Maine, Massachusetts, New Hampshire, Rhode Island, and Vermont.

² Includes data for States not published in this table.

Sheep and Lamb Farm Slaughter and Death Loss – States and United States: 2015 and 2016

State	Farm slaughter ¹		Deaths			
			Sheep		Lambs	
	2015	2016	2015	2016	2015	2016
	(1,000 head)	(1,000 head)	(1,000 head)	(1,000 head)	(1,000 head)	(1,000 head)
Arizona	12.4	13.0	7.0	6.0	3.0	6.0
California	4.4	4.3	14.0	15.0	9.0	12.0
Colorado	2.6	2.7	14.0	13.0	16.0	16.0
Idaho	2.6	2.6	9.0	9.0	11.0	9.0
Illinois	2.0	2.1	3.0	2.5	6.5	5.5
Indiana	3.4	3.3	2.0	2.0	6.0	6.0
Iowa	1.4	1.5	8.0	7.5	18.0	17.0
Kansas	2.6	2.3	3.0	2.5	6.0	6.0
Kentucky	0.5	0.9	3.0	2.5	7.0	5.0
Michigan	2.1	2.0	3.0	3.0	8.0	7.0
Minnesota	4.1	3.1	7.0	6.5	14.0	16.0
Missouri	1.0	1.0	4.0	4.0	10.0	10.0
Montana	1.5	1.9	11.0	11.0	16.0	16.0
Nebraska	0.3	0.5	4.0	3.5	9.0	8.5
Nevada	1.0	1.4	4.0	4.0	10.0	10.0
New England ²	2.3	2.0	1.5	1.5	2.3	2.5
New Mexico	5.4	5.4	6.0	5.5	4.5	7.0
New York	2.6	2.3	4.0	3.5	6.5	6.0
North Carolina	0.1	0.4	1.5	1.0	2.7	2.5
North Dakota	0.5	0.5	3.0	2.5	7.0	6.0
Ohio	3.1	3.0	6.0	6.0	11.0	12.0
Oklahoma	1.3	2.0	3.5	3.0	5.5	6.0
Oregon	4.1	4.1	9.0	8.0	6.0	8.0
Pennsylvania	2.0	1.5	5.0	4.0	9.0	8.0
South Dakota	1.5	1.2	9.0	8.0	24.0	21.0
Tennessee	1.3	1.1	3.5	3.0	6.5	6.0
Texas	2.1	2.5	37.0	35.0	67.0	65.0
Utah	6.2	6.1	10.0	11.0	15.0	15.0
Virginia	3.1	2.6	4.0	4.0	9.5	9.0
Washington	6.2	6.1	3.5	3.0	2.0	3.0
West Virginia	0.9	0.9	2.5	2.0	6.0	4.0
Wisconsin	1.5	1.5	3.0	3.0	7.0	8.0
Wyoming	2.0	2.5	9.0	9.5	11.0	12.0
Other States ³	7.0	6.5	12.0	11.5	22.0	21.0
United States	95.1	94.8	229.0	217.0	374.0	372.0

¹ Excludes custom slaughter for farmers at commercial establishments.

² New England includes Connecticut, Maine, Massachusetts, New Hampshire, Rhode Island, and Vermont.

³ Includes data for States not published in this table.

Wool Production – States and United States: 2015 and 2016

State	Sheep shorn		Weight per fleece		Production	
	2015 (1,000 head)	2016 (1,000 head)	2015 (pounds)	2016 (pounds)	2015 (1,000 pounds)	2016 (1,000 pounds)
Arizona	110.0	95.0	5.6	6.4	620	610
California	430.0	410.0	6.6	6.6	2,850	2,700
Colorado	320.0	295.0	7.5	7.5	2,410	2,200
Idaho	200.0	195.0	8.3	8.2	1,650	1,600
Illinois	44.0	33.0	7.0	6.1	310	200
Indiana	34.0	35.0	6.2	6.3	210	220
Iowa	165.0	165.0	5.5	5.5	900	900
Kansas	42.0	43.0	6.5	6.6	275	285
Kentucky	12.0	11.0	6.7	6.4	80	70
Michigan	66.0	68.0	6.0	6.0	395	405
Minnesota	120.0	127.0	6.4	6.2	770	790
Missouri	44.0	43.0	6.0	6.0	265	260
Montana	205.0	200.0	9.0	9.0	1,840	1,800
Nebraska	63.0	64.0	7.3	7.0	460	450
Nevada	47.0	48.0	9.4	8.8	440	420
New England ¹	31.0	30.0	6.5	6.7	200	200
New Mexico	82.0	89.0	7.9	7.9	645	700
New York	53.0	53.0	6.1	5.8	325	310
North Carolina	8.0	7.0	5.0	5.0	40	35
North Dakota	64.0	59.0	7.6	7.3	485	430
Ohio	81.0	79.0	6.0	5.9	490	470
Oklahoma	17.0	19.0	5.6	5.5	95	105
Oregon	152.0	142.0	6.6	6.3	1,000	900
Pennsylvania	48.0	45.0	6.6	6.9	315	310
South Dakota	239.0	230.0	7.6	7.6	1,820	1,750
Tennessee	19.0	18.0	5.5	5.6	105	100
Texas	270.0	255.0	7.2	6.7	1,950	1,700
Utah	255.0	245.0	9.4	9.4	2,390	2,300
Virginia	27.0	25.0	5.4	5.6	145	140
Washington	33.0	31.0	7.9	8.1	260	250
West Virginia	22.0	20.0	5.5	4.5	120	90
Wisconsin	51.0	51.0	7.2	6.7	365	340
Wyoming	270.0	280.0	9.2	8.6	2,480	2,400
Other States ²	51.0	50.0	6.1	6.0	310	300
United States	3,675.0	3,560.0	7.4	7.2	27,015	25,740

¹ New England includes Connecticut, Maine, Massachusetts, New Hampshire, Rhode Island, and Vermont.

² Includes data for States not published in this table.

Wool Price and Value – States and United States: 2015 and 2016

[United States value may not add due to rounding]

State	Price per pound		Value ¹	
	2015 (dollars)	2016 (dollars)	2015 (1,000 dollars)	2016 (1,000 dollars)
Arizona	1.15	1.00	713	610
California	1.55	1.50	4,418	4,050
Colorado	1.80	1.70	4,338	3,740
Idaho	1.53	1.59	2,525	2,544
Illinois	0.75	0.79	233	158
Indiana	0.75	0.50	158	110
Iowa	0.79	0.56	711	504
Kansas	0.87	0.89	239	254
Kentucky	0.80	0.90	64	63
Michigan	0.72	0.71	284	288
Minnesota	0.79	0.62	608	490
Missouri	0.73	0.88	193	229
Montana	1.90	1.90	3,496	3,420
Nebraska	0.90	0.94	414	423
Nevada	2.10	2.00	924	840
New England ²	0.80	0.85	160	170
New Mexico	1.40	1.50	903	1,050
New York	0.60	0.70	195	217
North Carolina	1.20	1.50	48	53
North Dakota	1.28	1.13	621	486
Ohio	0.74	0.53	363	249
Oklahoma	0.70	0.80	67	84
Oregon	1.73	1.38	1,730	1,242
Pennsylvania	0.60	0.60	189	186
South Dakota	1.26	1.43	2,293	2,503
Tennessee	0.84	0.90	88	90
Texas	1.64	1.75	3,198	2,975
Utah	1.70	1.80	4,063	4,140
Virginia	1.05	1.25	152	175
Washington	1.90	2.10	494	525
West Virginia	1.00	1.25	120	113
Wisconsin	0.75	0.70	274	238
Wyoming	1.80	1.90	4,464	4,560
Other States ³	1.50	1.45	465	435
United States	1.45	1.45	39,205	37,214

¹ Production multiplied by marketing year average price. United States value is the summation of State values.

² New England includes Connecticut, Maine, Massachusetts, New Hampshire, Rhode Island, and Vermont.

³ Includes data for States not published in this table.

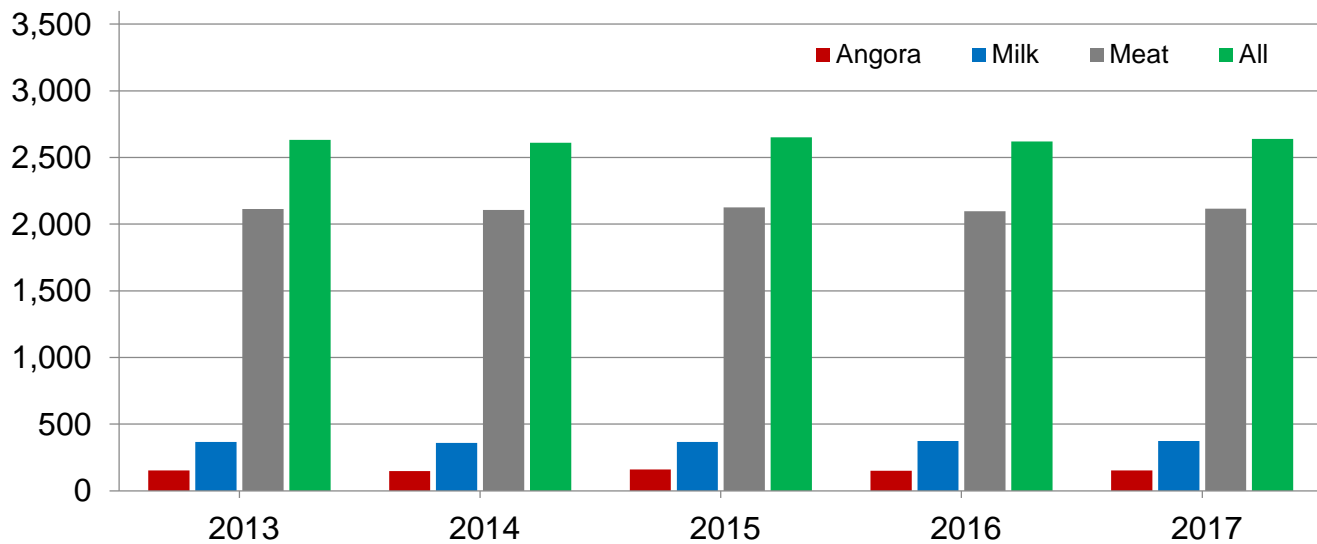
Goat and Kid Inventory by Class – United States: January 1, 2016 and 2017

Class	2016	2017	2017 as percent of 2016
	(head)	(head)	(percent)
All goats and kids	2,620,000	2,640,000	101
All, breeding goats	2,161,000	2,171,000	100
Replacement kids - under one year	391,000	393,000	101
Does - one year old and older	1,607,000	1,614,000	100
Bucks - one year old and older	163,000	164,000	101
All, market goats and kids	459,000	469,000	102
Kid crop ¹	1,631,000	1,641,000	101

¹ Kid crop refers to kids born the previous year.

All Goat Inventory – United States: January 1

Thousand head



Angora Goat Inventory by Class – United States: January 1, 2016 and 2017

Class	2016	2017	2017 as percent of 2016
	(head)	(head)	(percent)
Angora goats and kids	150,000	152,000	101
Angora, breeding goats	130,000	131,000	101
Replacement kids - under one year	19,500	20,000	103
Does - one year old and older	103,500	104,000	100
Bucks - one year old and older	7,000	7,000	100
Angora, market goats and kids	20,000	21,000	105
Kid crop ¹	78,000	76,000	97

¹ Kid crop refers to kids born the previous year.

Milk Goat Inventory by Class – United States: January 1, 2016 and 2017

Class	2016	2017	2017 as percent of 2016
	(head)	(head)	(percent)
Milk goats and kids	373,000	373,000	100
Milk, breeding goats	335,000	334,000	100
Replacement kids - under one year	71,000	71,000	100
Does - one year old and older	240,000	239,000	100
Bucks - one year old and older	24,000	24,000	100
Milk, market goats and kids	38,000	39,000	103
Kid crop ¹	258,000	260,000	101

¹ Kid crop refers to kids born the previous year.

Meat and Other Goat Inventory by Class – United States: January 1, 2016 and 2017

Class	2016	2017	2017 as percent of 2016
	(head)	(head)	(percent)
Meat and other goats and kids	2,097,000	2,115,000	101
Meat and other, breeding goats	1,696,000	1,706,000	101
Replacement kids - under one year	300,500	302,000	100
Does - one year old and older	1,263,500	1,271,000	101
Bucks - one year old and older	132,000	133,000	101
Meat and other, market goats and kids	401,000	409,000	102
Kid crop ¹	1,295,000	1,305,000	101

¹ Kid crop refers to kids born the previous year.

Angora Goat Inventory – States and United States: January 1, 2016 and 2017

State	2016	2017	2017 as percent of 2016
	(head)	(head)	(percent)
Arizona	35,000	35,000	100
California	3,600	3,400	94
New Mexico	10,000	10,500	105
Texas	78,000	80,000	103
Other States ¹	23,400	23,100	99
United States	150,000	152,000	101

¹ Includes data for States not published in this table.

Mohair Production, Price, and Value – States and United States: 2015 and 2016

[United States value may not add due to rounding]

State	Goats clipped		Average clip per goat		Production		Price per pound		Value ¹	
	2015	2016	2015	2016	2015	2016	2015	2016	2015	2016
	(head)	(head)	(pounds)	(pounds)	(1,000 pounds)	(1,000 pounds)	(dollars)	(dollars)	(1,000 dollars)	(1,000 dollars)
Arizona	29,000	30,000	4.0	4.2	115	125	1.60	1.40	184	175
California	2,000	2,000	5.0	5.0	10	10	6.00	6.00	60	60
New Mexico	8,000	8,000	3.8	3.8	30	30	1.40	1.20	42	36
Texas	78,000	80,000	6.2	6.4	480	510	7.10	6.00	3,408	3,060
Other States ² ..	22,000	21,000	5.9	6.0	130	125	2.75	2.55	358	319
United States ...	139,000	141,000	5.5	5.7	765	800	5.30	4.56	4,052	3,650

¹ Production multiplied by marketing year average price. United States value is summation of State values.

² Includes data for States not published in this table.

Milk Goat Inventory – States and United States: January 1, 2016 and 2017

State	2016	2017	2017 as percent of 2016
	(head)	(head)	(percent)
Alabama	3,800	3,900	103
Arkansas	4,600	4,500	98
California	39,000	41,000	105
Colorado	10,000	9,000	90
Florida	9,500	10,000	105
Georgia	3,100	3,500	113
Idaho	3,800	4,200	111
Illinois	5,600	6,000	107
Indiana	11,500	11,000	96
Iowa	33,000	30,500	92
Kansas	4,200	4,700	112
Kentucky	5,000	5,500	110
Michigan	11,800	12,500	106
Minnesota	13,500	12,000	89
Missouri	11,300	10,300	91
Nebraska	3,200	3,700	116
New England ¹	14,500	14,200	98
New York	12,300	13,700	111
North Carolina	8,100	6,400	79
Ohio	9,500	10,000	105
Oklahoma	6,600	6,000	91
Oregon	12,200	12,600	103
Pennsylvania	14,000	15,000	107
South Carolina	3,400	3,000	88
Tennessee	7,200	7,000	97
Texas	22,000	22,000	100
Virginia	5,700	6,000	105
Washington	8,000	7,500	94
Wisconsin	44,000	44,000	100
Other States ²	32,600	33,300	102
United States	373,000	373,000	100

¹ New England includes Connecticut, Maine, Massachusetts, New Hampshire, Rhode Island, and Vermont.

² Includes data for States not published in this table.

Meat and Other Goat Inventory – States and United States: January 1, 2016 and 2017

State	2016	2017	2017 as percent of 2016
	(head)	(head)	(percent)
Alabama	47,000	45,000	96
Arizona	27,000	27,000	100
Arkansas	36,000	36,000	100
California	90,000	87,000	97
Colorado	24,000	25,000	104
Florida	45,000	44,000	98
Georgia	72,000	67,000	93
Illinois	19,000	18,000	95
Indiana	32,000	33,000	103
Iowa	28,000	32,000	114
Kansas	43,000	46,000	107
Kentucky	59,000	56,000	95
Louisiana	19,000	18,000	95
Minnesota	21,000	22,000	105
Mississippi	20,000	19,000	95
Missouri	70,000	75,000	107
New York	17,000	17,000	100
North Carolina	45,000	50,000	111
Ohio	44,000	42,000	95
Oklahoma	91,000	92,000	101
Oregon	27,000	27,000	100
Pennsylvania	37,000	37,000	100
South Carolina	34,000	32,000	94
Tennessee	115,000	110,000	96
Texas	765,000	790,000	103
Virginia	47,000	45,000	96
Washington	22,000	20,000	91
West Virginia	21,000	21,000	100
Other States ¹	180,000	182,000	101
United States	2,097,000	2,115,000	101

¹ Includes data for States not published in this table.

Statistical Methodology

Survey Procedures: A random sample of United States producers was surveyed to provide data for these estimates. Survey procedures ensured that all sheep and goat producers, regardless of size, had a chance to be included in the survey. Large producers were sampled more heavily than small operations. About 22,300 operators were contacted during the first half of January by mail, telephone and face-to-face personal interview and 68 percent of the reports were usable. Regardless of when operators responded, they were asked to report inventories as of January 1.

Estimating Procedures: These sheep and goat estimates were prepared by the Agricultural Statistics Board. National and State survey data were reviewed for reasonableness and with estimates from past years. A projected balance sheet for calendar year 2016 was also used. The balance sheet begins with the previous inventory estimate, adds estimates of births and imports, and subtracts estimates of slaughter, exports and deaths. This indicated ending inventory level is compared with the Agricultural Statistics Board estimate for reasonableness.

Revision Policy: Revisions to previous estimates are made to improve the current estimate. Previous year estimates are subject to revision when current estimates are made. Estimates will also be reviewed after data from the Department of Agriculture's five-year Census of Agriculture are available. No revisions will be made after that date.

Reliability: Since all operations raising sheep and goats are not included in the sample, survey estimates are subject to sampling variability. Survey results are also subject to non-sampling errors, such as omissions, duplications, and mistakes in reporting, recording, and processing the data. The effects of these errors cannot be measured directly. They are minimized through rigid quality controls in the data collection process and through a careful review of all reported data for consistency and reasonableness.

To assist users in evaluating reliability of the estimates in this report, the "**Root Mean Square Error**" is shown for selected sheep items in the following table. The "Root Mean Square Error" is a statistical measure based on past performance and is computed using the differences between the first and latest estimates.

The "Root Mean Square Error" for sheep and lamb inventory estimates over the past 10 years is 0.8 percent. This means that chances are 2 out of 3 that the final estimate will not be above or below the current estimate of 5.2 million head by more than 0.8 percent. Chances are 9 out of 10 that the difference will not exceed 1.5 percent.

The "Root Mean Square Error" for sheep shorn over the past 10 years is 1.2 percent. This means that chances are 2 out of 3 that the final estimate will not be above or below the current estimate of 3.56 million head by more than 1.2 percent. Chances are 9 out of 10 that the difference will not exceed 2.3 percent.

Also shown in the table is a 10-year record showing the range between the first inventory estimate and the latest estimate. Using estimates for All Sheep and Lambs as an example, changes between the first inventory estimate and the latest estimate during the past 10 years have averaged 35,000 head, ranging from 0 to 105,000 head. The initial inventory estimate of All Sheep and Lambs has been below the latest estimate 4 times and above the latest estimate 4 times in the last 10 years.

For Sheep and Lambs Shorn, changes between the first inventory estimate and the latest estimate during the past 10 years have averaged 23,000 head, ranging from 0 to 140,000 head. The initial inventory estimate of Sheep and Lambs Shorn has been below the latest estimate 0 times and above 5 times in the last 10 years.

Reliability of January 1 Sheep and Lamb Estimates

[Based on data for the past ten years]

Item	Root mean square error	90 percent confidence level	Difference between first and latest estimate				
			Average	Smallest	Largest	Years	
						Below latest	Above latest
	(percent)	(percent)	(1,000 head)	(1,000 head)	(1,000 head)	(number)	(number)
All sheep and lambs	0.8	1.5	35	0	105	4	4
Breeding sheep	0.8	1.5	23	0	74	3	4
Lamb crop	1.7	3.1	36	0	155	1	5
Sheep shorn	1.2	2.3	23	0	140	0	5
	(percent)	(percent)	(1,000 pounds)	(1,000 pounds)	(1,000 pounds)	(number)	(number)
Wool production	1.0	1.9	147	0	870	1	7

Information Contacts

Listed below are the commodity specialists in the Livestock Branch of the National Agricultural Statistics Service to contact for additional information. E-mail inquiries may be sent to nass@nass.usda.gov.

Dan Kerestes, Chief, Livestock Branch	(202) 720-3570
Scott Hollis, Head, Livestock Section	(202) 690-2424
Sherry Bertramsen – Livestock Slaughter	(202) 720-3240
David Colwell – Sheep and Goats	(202) 720-8784
Donnie Fike – Dairy Products	(202) 690-3236
Michael Klamm – Cattle, Cattle on Feed	(202) 720-3040
Mike Miller – Milk Production and Milk Cows	(202) 720-3278
Seth Riggins – Hogs and Pigs	(202) 720-3106

Access to NASS Reports

For your convenience, you may access NASS reports and products the following ways:

- All reports are available electronically, at no cost, on the NASS web site: www.nass.usda.gov
- Both national and state specific reports are available via a free e-mail subscription. To set-up this free subscription, visit www.nass.usda.gov and click on “National” or “State” in upper right corner above “search” box to create an account and select the reports you would like to receive.

For more information on NASS surveys and reports, call the NASS Agricultural Statistics Hotline at (800) 727-9540, 7:30 a.m. to 4:00 p.m. ET, or e-mail: nass@nass.usda.gov.

The U.S. Department of Agriculture (USDA) prohibits discrimination against its customers, employees, and applicants for employment on the basis of race, color, national origin, age, disability, sex, gender identity, religion, reprisal, and where applicable, political beliefs, marital status, familial or parental status, sexual orientation, or all or part of an individual's income is derived from any public assistance program, or protected genetic information in employment or in any program or activity conducted or funded by the Department. (Not all prohibited bases will apply to all programs and/or employment activities.)

If you wish to file a Civil Rights program complaint of discrimination, complete the [USDA Program Discrimination Complaint Form](#) (PDF), found online at http://www.ascr.usda.gov/complaint_filing_cust.html, or at any USDA office, or call (866) 632-9992 to request the form. You may also write a letter containing all of the information requested in the form. Send your completed complaint form or letter to us by mail at U.S. Department of Agriculture, Director, Office of Adjudication, 1400 Independence Avenue, S.W., Washington, D.C. 20250-9410, by fax (202) 690-7442 or email at program.intake@usda.gov.



United States Department of Agriculture

USDA's
93rd
Annual

Agricultural
Outlook Forum

A New Horizon:

The Future of Agriculture

Early Registration
\$450 ends
January 26, 2017
\$500 after
January 27, 2017

February 23-24, 2017
Crystal Gateway Marriott Hotel
Arlington, Virginia

Register: www.usda.gov/oce/forum